



CYLINDERS

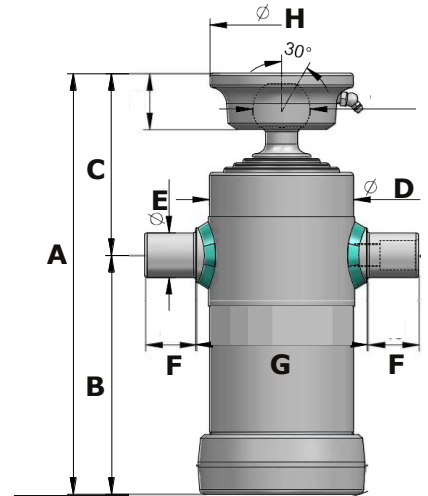
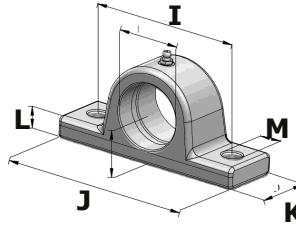
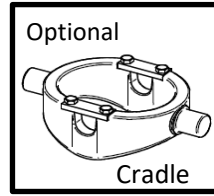
Mid-Mount Underbody Cylinders	8.1
Light Series Bottom Pin Type Cylinders	8.2
AG Cylinders 1.5" Bore	8.3
AG Cylinders 2.0" Bore	8.4
AG Cylinders 2.5" Bore	8.5
AG Cylinders 3.0" Bore	8.6
AG Cylinders 3.5" Bore	8.7
AG Cylinders 4.0" Bore	8.8
AG Cylinders 5.0" Bore	8.9
Landing Leg & Chute Cylinder	8.10

1800 022 831

www.heavyhydraulics.com.au

Premium Italian-manufactured cylinders:

- High quality finish on the outer diameter of all tubes
- Anti-friction surface, enabling sliding of steel against steel
- Saline nitriding treatment resistant to wear and stress
- Hoist kit includes brackets and inlet fitting



BRACKET DIMENSIONS					
E \varnothing	I	J	K	L	M
mm					
35	95	120	45	12	13
40	105	140	45	15	15
45	105	140	45	15	15
50	120	155	50	17	15

Part Number	Stages	Stroke	Pivots	Capacity	Volume	A*	B	C*	D	E	F	G	I	Weight kg	Port Size BSP
		mm	(48° mm)	t	L	mm									
HK3047S	4	1510	1230	8	8.8	571	395	176	124	40	40	147	95	43	1/2"
HK3048S	4	1710	1400	8	10	621	445	176	124	40	40	147	95	47	1/2"
HK3049S	4	1990	1630	8	11	691	515	176	124	40	40	147	95	51	1/2"
HK3053S	5	1480	1210	9	11	498	313	185	150	45	45	172	95	53	1/2"
HK3055S	5	2130	1740	9	16	628	443	185	150	45	45	172	95	67	1/2"
HK3063S	4	790	650	6	3.2	380	220	160	112	35	40	134	112	22	1/2"
HK3065S	4	1050	860	6	4.3	445	280	160	112	35	40	134	112	27	1/2"
HK3092S	5	1040	850	7	5	395	225	170	124	40	40	147	112	29	1/2"
HK3093S	5	1190	970	7	6	425	255	170	124	40	40	147	112	31	1/2"
HK3094S	5	1490	1220	7	7.5	485	315	170	124	40	40	147	112	35	1/2"
HK3095S	5	2140	1750	7	11	615	445	170	124	40	40	147	112	45	1/2"
HK3096S	5	2490	2030	7	12	685	515	170	124	40	40	147	112	51	1/2"
HK3356S	5	2480	2020	9	18	698	513	185	150	45	45	172	95	75	1/2"
HK4058S	6	1540	1260	17	19	466	208	268	190	50	45	230	108	82	3/4"
HK4059S	6	1810	1480	17	22	521	253	268	190	50	45	230	108	89	3/4"
HK4060S	6	2225	1820	17	26	591	323	268	190	50	45	230	108	102	3/4"
HK4062S	6	2945	2400	17	35	711	443	268	190	50	45	230	108	125	3/4"
HK5010S	5	3490	2850	18	46	935	670	265	190	50	45	230	108	139	3/4"
HK6002S	6	840	690	5	3.6	310	155	155	124	40	40	147	112	24	1/2"
HK6003S	6	1005	820	5	4.5	360	185	175	124	40	40	147	112	26	1/2"
HK6008S	6	1480	1210	7	8.9	438	263	175	150	45	45	172	112	46	1/2"
HK6009S	6	1780	1450	7	11	488	313	175	150	45	45	172	112	51	1/2"
HK6012S	6	2977	2430	7	19	688	513	175	150	45	45	172	112	70	1/2"
HK8004S	8	1940	1580	9	20	462	192	270	190	50	45	230	95	78	3/4"

(* Closed height measurement (A & C) including 20mm pull-out

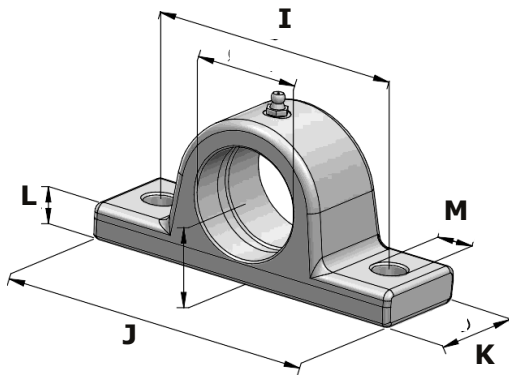
- A tipper body will not meet Australian Standard AS1418.8, or Occupational Health & Safety regulations without a Hoist Safety Valve, or similar safety device, fitted.
- Hoist capacity relates to the body weight plus the payload. This value, calculated at the rated working pressure, is an approximate indication of tipping capacity, to be used as the first criteria for hoist selection. Actual tipping capacity can only be determined by the tipper designer/manufacturer and must consider all geometry of the tipper body and operating conditions.
- Rated working pressure 150 bar. Maximum working pressure 200 bar.



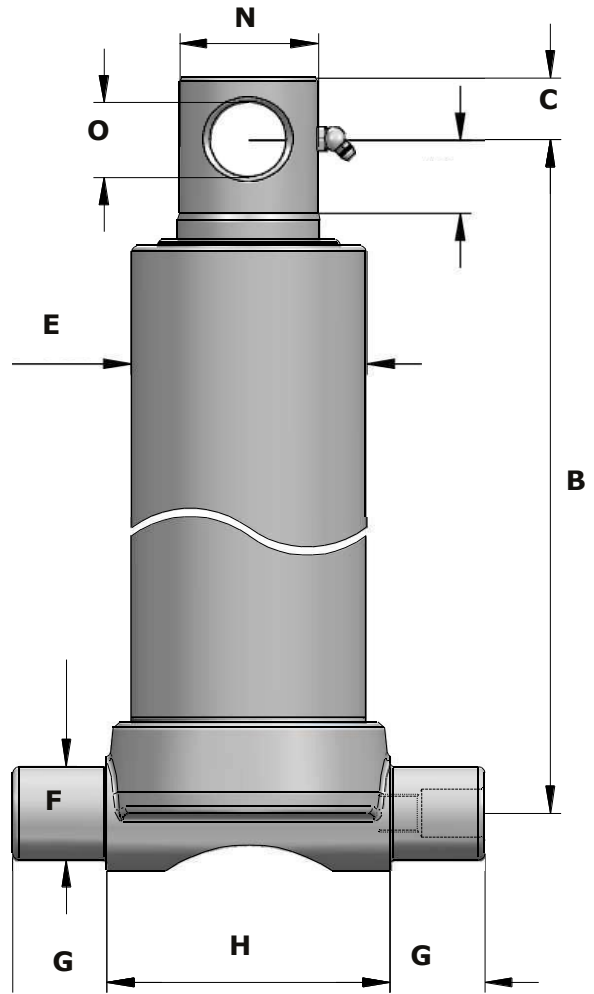
1800 022 831
www.heavyhydraulics.com.au

Premium Italian-manufactured cylinders:

- High quality finish on the outer diameter of all tubes
- Anti-friction surface, enabling sliding of steel against steel
- Saline nitriding treatment resistant to wear and stress
- Hoist kit includes brackets and inlet fitting



BRACKET DIMENSIONS					
E \varnothing	I	J	K	L	M
mm					
45	105	140	45	15	15



Part Number	Stages	Stroke	Capacity	Volume	B*	C	E	F	G	H	N	O	Weight	Port Size
		mm	t	L										
HK2534F	3	790	5	2.5	400	25	45	93	45	115	44	26	18	1/2"
HK3522F	2	595	5.5	2.3	438	30	45	93	45	115	59	31	20	1/2"
HK3535F	3	1043	7.5	5	492	30	45	112	45	135	59	31	33	1/2"
HK3545F	4	1190	10	7	447	30	45	124	45	150	59	31	35	1/2"
HK3546F	4	1290	10	7.5	472	30	45	124	45	150	59	31	38	1/2"
HK3547F	4	1510	10	8.8	527	30	45	124	45	150	59	31	42	1/2"
HK3548F	4	1710	10	10	577	30	45	124	45	150	59	31	45	1/2"

(*) Closed height measurement (B) including 20mm pull out

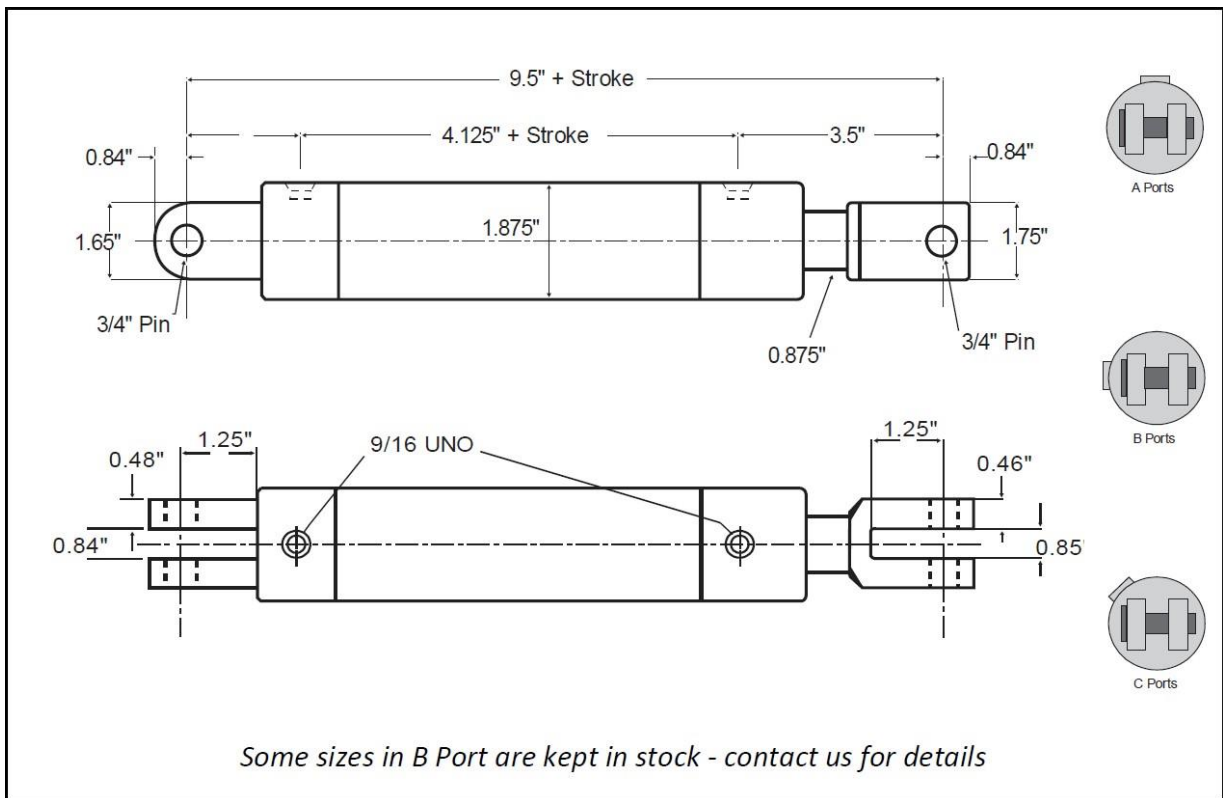
- A tipper body will not meet Australian Standard AS1418.8, or Occupational Health & Safety regulations without a Hoist Safety Valve, or similar safety device, fitted.
- Hoist capacity relates to the body weight plus the payload. This value, calculated at the rated working pressure, is an approximate indication of tipping capacity, to be used as the first criteria for hoist selection. Actual tipping capacity can only be determined by the tipper designer/manufacturer, and must consider all geometry of the tipper body and operating conditions.
- Rated working pressure 150 bar. Maximum working pressure 200 bar.



1800 022 831
www.heavyhydraulics.com.au

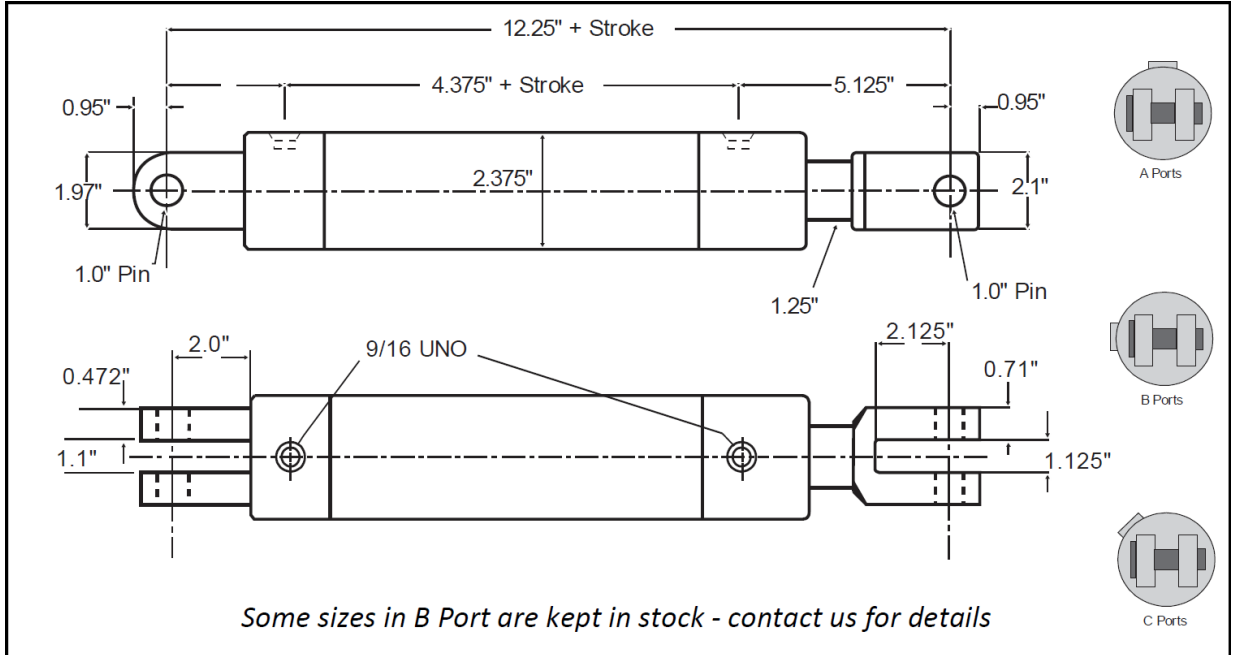
1.5" Bore

Part Number	Stroke	Closed Centre	Max Pressure/Cap	Ports/Pins
AG 1502A	2.0"	9.5" + Stroke	3500 psi (2.3 tonne @ 3000 psi)	9/16 UNO 3/4" Pins
AG 1504A	4.0"			
AG 1506A	6.0"			
AG 1508A	8.0"			
AG 1510A	10.0"			
AG 1512A	12.0"			
AG 1514A	14.0"			
AG 1516A	16.0"			
AG 1518A	18.0"			
AG 1520A	20.0"			
AG 1524A	24.0"			
AG 1530A	30.0"			
AG 1536A	36.0"			
AG 1548A	48.0"			



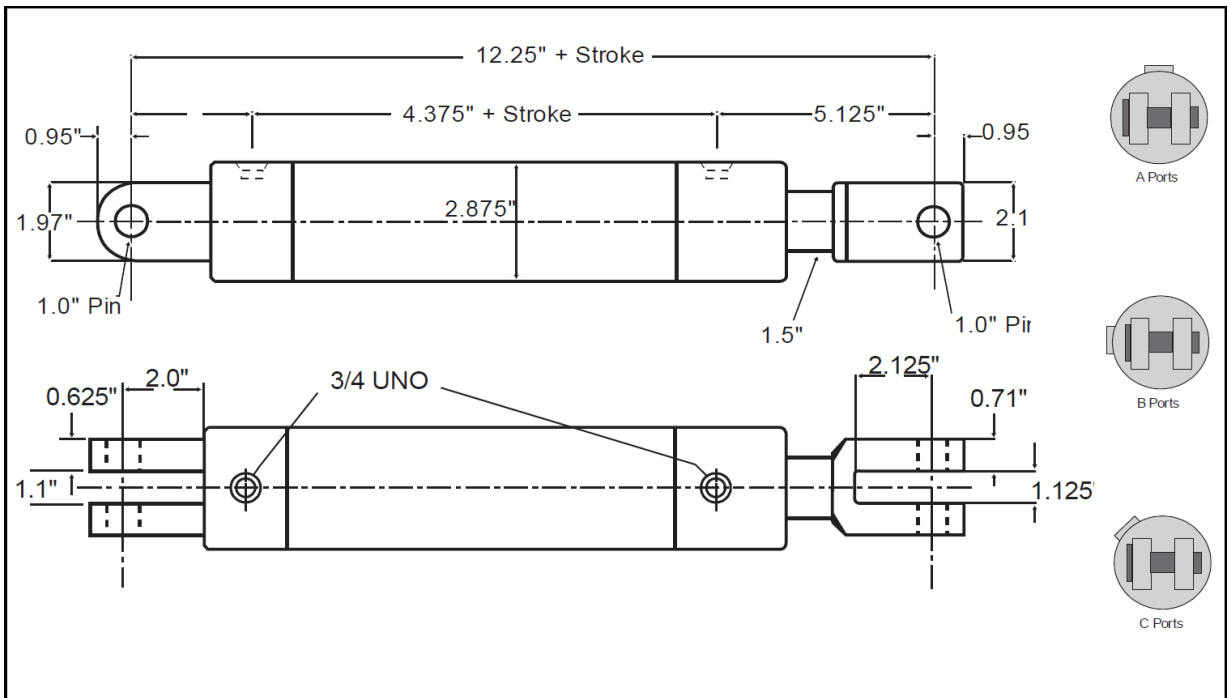
2.0" Bore

Part Number	Stroke	Closed Centre	Max Pressure/Cap	Ports/Pins
AG 2002A	2.0"	12.25" + Stroke	3500 psi (4.2 tonne @ 3000 psi)	9/16 UNO 1.0" Pins
AG 2004A	4.0"			
AG 2006A	6.0"			
AG 2008A	8.0"			
AG 2010A	10.0"			
AG 2012A	12.0"			
AG 2014A	14.0"			
AG 2016A	16.0"			
AG 2018A	18.0"			
AG 2020A	20.0"			
AG 2022A	22.0"			
AG 2024A	24.0"			
AG 2026A	26.0"			
AG 2028A	28.0"			
AG 2030A	30.0"			
AG 2036A	36.0"			
AG 2042A	42.0"			
AG 2048A	48.0"			



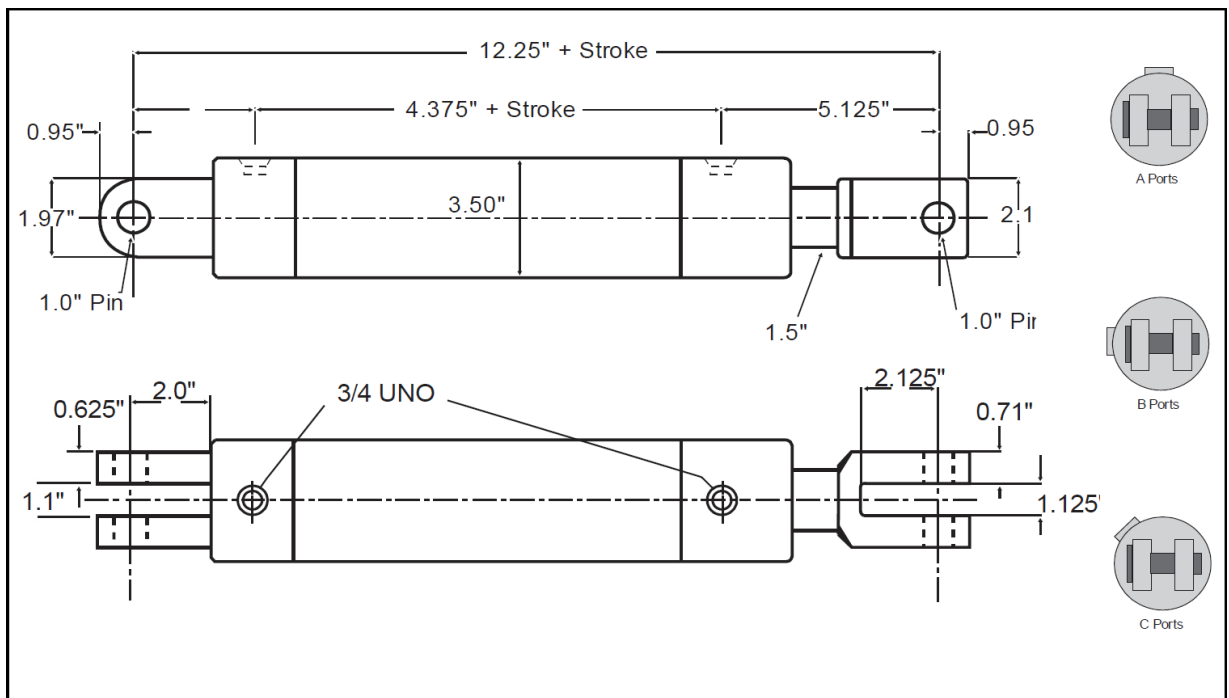
2.5" Bore

Part Number	Stroke	Closed Centre	Max Pressure/Cap	Ports/Pins
AG 2504D	4.0"	12.25" + Stroke	3500 psi (6.6 tonne @ 3000 psi)	3/4 UNO 1.0" Pins
AG 2506D	6.0"			
AG 2508D	8.0"			
AG 2510D	10.0"			
AG 2512D	12.0"			
AG 2514D	14.0"			
AG 2516D	16.0"			
AG 2518D	18.0"			
AG 2520D	20.0"			
AG 2522D	22.0"			
AG 2524D	24.0"			
AG 2526D	26.0"			
AG 2528D	28.0"			
AG 2530D	30.0"			
AG 2536D	36.0"			
AG 2542D	42.0"			
AG 2548D	48.0"			



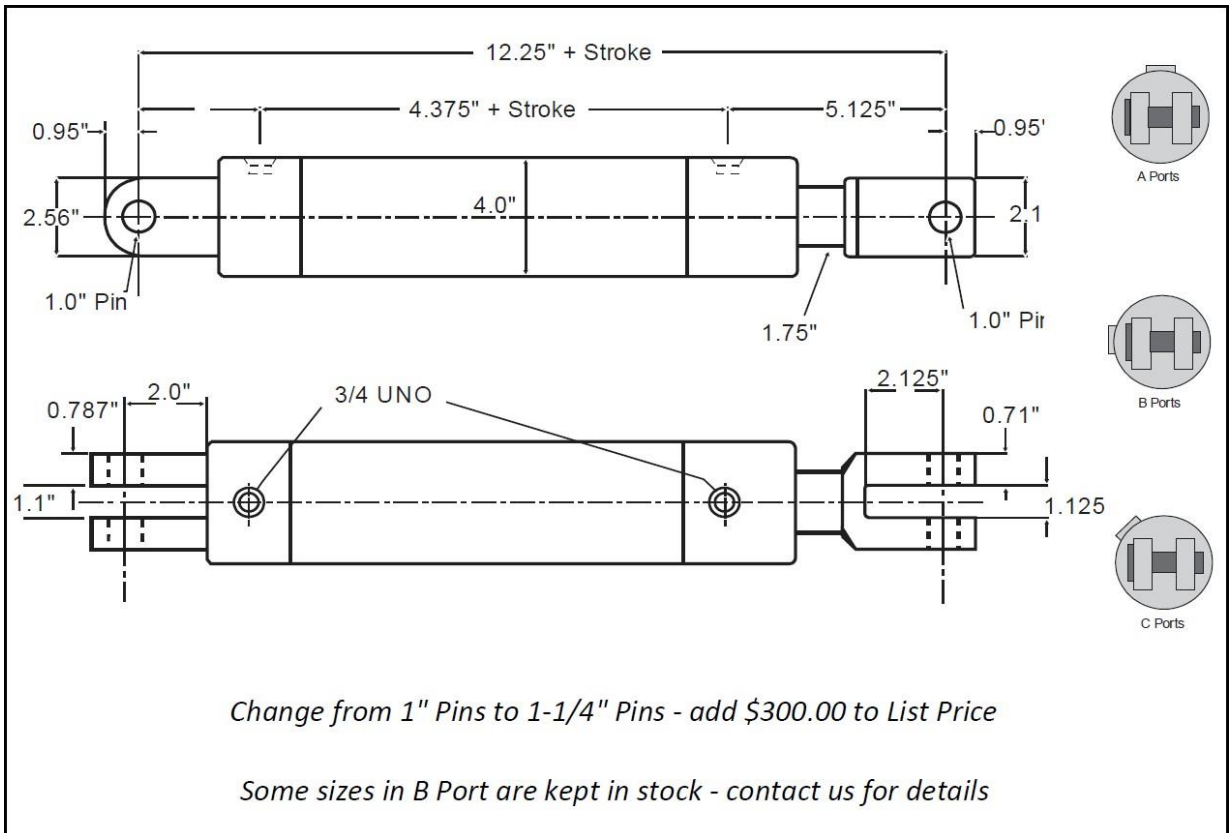
3.0" Bore

Part Number	Stroke	Closed Centre	Max Pressure/Cap	Ports/Pins
AG 3004D	4.0"	12.25" + Stroke	3250 psi (9.5 tonne @ 3000 psi)	3/4 UNO 1.0" Pins
AG 3006D	6.0"			
AG 3008D	8.0"			
AG 3010D	10.0"			
AG 3012D	12.0"			
AG 3014D	14.0"			
AG 3016D	16.0"			
AG 3018D	18.0"			
AG 3020D	20.0"			
AG 3022D	22.0"			
AG 3024D	24.0"			
AG 3026D	26.0"			
AG 3028D	28.0"			
AG 3030D	30.0"			
AG 3036D	36.0"			
AG 3042D	42.0"			
AG 3048D	48.0"			



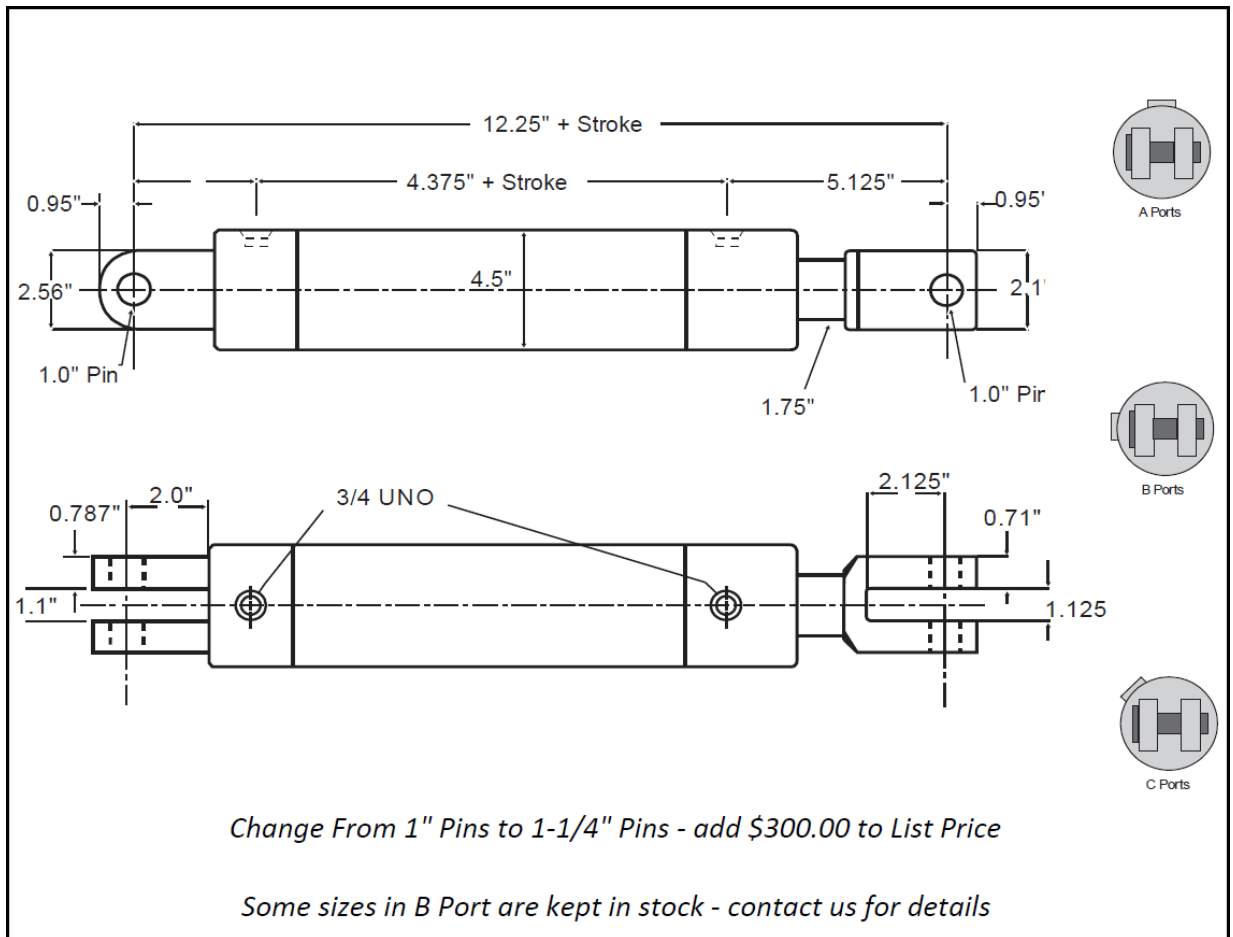
3.5" Bore

Part Number	Stroke	Closed Centre	Max Pressure/Cap	Ports/Pins
AG 3506A	6.0"	12.25" + Stroke	3250 psi (12.8 tonne @ 3000 psi)	3/4 UNO 1.0" Pins
AG 3508A	8.0"			
AG 3510A	10.0"			
AG 3512A	12.0"			
AG 3514A	14.0"			
AG 3516A	16.0"			
AG 3518A	18.0"			
AG 3520A	20.0"			
AG 3524A	24.0"			
AG 3530A	30.0"			
AG 3536A	36.0"			
AG 3542A	42.0"			
AG 3548A	48.0"			



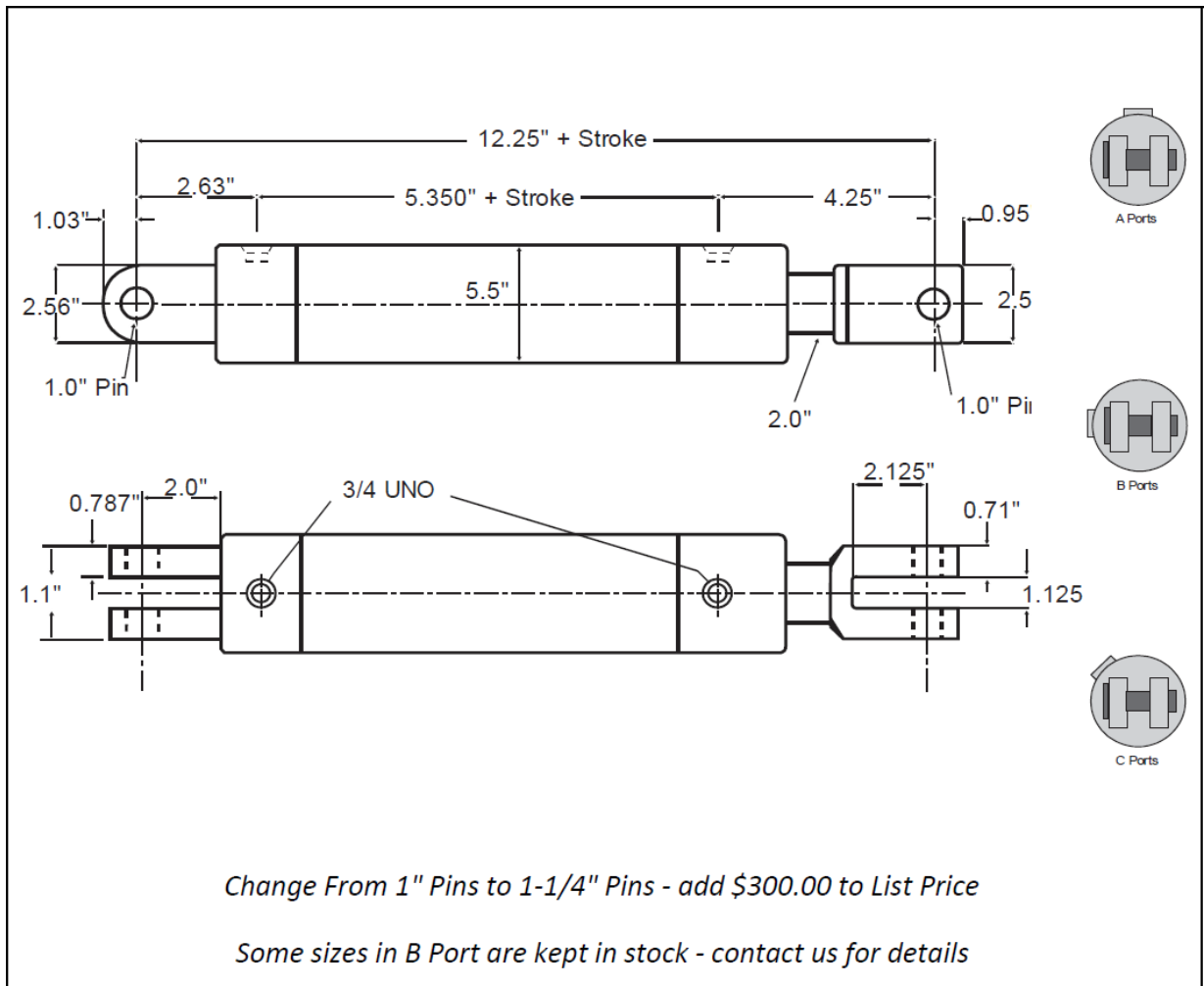
4.0" Bore

Part Number	Stroke	Closed Centre	Max Pressure/Cap	Ports/Pins
AG 4008A	8.0"	12.25" + Stroke	3000 psi (16.5 tonne @ 3000 psi)	3/4 UNO 1.0" Pins
AG 4012A	12.0"			
AG 4016A	16.0"			
AG 4018A	18.0"			
AG 4020A	20.0"			
AG 4024A	24.0"			
AG 4030A	30.0"			
AG 4036A	36.0"			
AG 4042A	42.0"			
AG 4048A	48.0"			



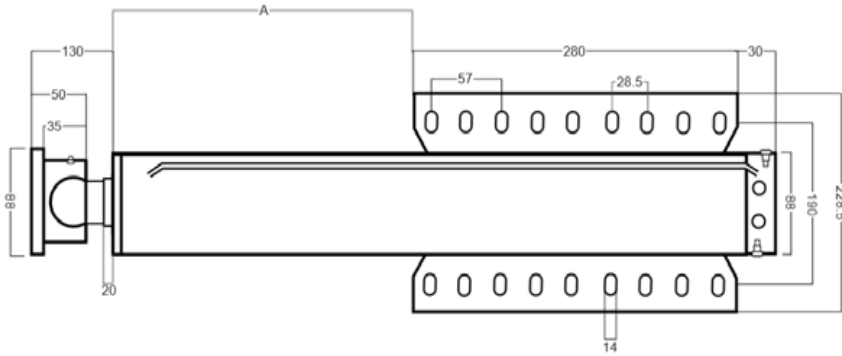
5.0" Bore

Part Number	Stroke	Closed Centre	Max Pressure/Cap	Ports/Pins
AG 5008A	8.0"	12.25" + Stroke	3000 psi (26.0 tonne @ 3000 psi)	3/4 UNO 1.0" Pins
AG 5012A	12.0"			
AG 5016A	16.0"			
AG 5018A	18.0"			
AG 5024A	24.0"			
AG 5030A	30.0"			
AG 5036A	36.0"			
AG 5048A	48.0"			



Landing Legs

Part Number	Rod	Bore	A	Stroke	Max Pressure	Ports
TF301620LEG	2"	3"	245mm	16"	3500psi	9/16" UNO
TF302020LEG			346mm	20"		
TF302420LEG			480mm	24"		



Concrete Truck Chute Jack Cylinders with Check Valve

Part Number	Stroke	Closed Centre	Open Centre	Max Pressure	Ports/Pins	Rod
TCB 30300	300mm	564mm	864mm	3250psi	9/16" ports 16mm eyes	1.1/4"

