



POWER PACKS

Power Pack Nomenclature	9.1
DC Power Pack - P & T	9.2
DC Power Pack - Single Acting	9.3
DC Power Pack - Double Acting	9.4
DC Power Pack - 2 x Double Acting	9.5
DC Power Pack - High Powered	9.6
DC Power Pack – High Power External Pump	9.8
Engine Power Pack - Petrol or Diesel	9.9
Power Pack - Tanks	9.10
Power Pack Accessories	9.11
Power Pack - Pendant Controls	9.12

1800 022 831

www.heavyhydraulics.com.au

Part #	Motor & Voltage	Valve	Valve Type	Suction	Pump CC	Tank	Special
	16DA	131	Z	H	21	2A	V

MOTOR	DESCRIPTION
03DA	350W/12VDC1700rpm
03DB	350W/24VDC1800rpm
08DA	800W/12VDC3200rpm
08DB	800W/24VDC3200rpm
16DA	1.6KW/12VDC2600rpm
16DB	1.6KW/24VDC2700rpm
25DA	2.5KW/12VDC2400rpm
25DB	2.5KW/24VDC3400rpm
30DA	3.0KW/12VDC1850rpm
40DB	4.0KW/24VDC2700rpm
15AA	1.1KW/415VAC2800rpm
30AA	2.2KW/415VAC2800rpm
40AC	3.0KW/415VAC2800rpm
50AC	4.0KW/415VAC2800rpm
60PE	6.0HP Petrol Electric start 3000rpm
60DE	6.7HP Diesel Electric start 2800rpm

Technical information - see page 28-30

VALVE TYPE	DESCRIPTION
Z	Closed Centre
C	Tandem Centre
H	Motor Spool
Y	A & B to T
S	Crossover S/A
U	Open Centre

SUCTION	DESCRIPTION
H	Horizontal Mount
V	Vertical Mount

PUMP	DESCRIPTION
037	0.37 cc
075	0.75 cc
08	0.8 cc
11	1.1 cc
16	1.6 cc
21	2.1 cc
27	2.7 cc
32	3.2 cc
37	3.7 cc
42	4.2 cc
48	4.8 cc
58	5.8 cc
70	7.0 cc
80	8.0 cc

Technical information - see page 30-31

TANK	DESCRIPTION
1S	MS1AB 1L useable
2S	MS2AB 1.4L useable
4S	MS4AB 2.4L useable
0B	MT0AB 2.5L
0P	RPOAB 3.0L
0A	LS0AB 3.0L
6S	MS6AB 3.3L
1A	LS1AB 3.8L
2A	LS2AB 5.7L
2B	MT2AB 7.5L
3B	MT3AB 10L
4B	MT4AB 12L
5B	MT5AB 15L
8B	MT18AB 18L (for petrol/diesel)
1K	OTK012 21L (for petrol/diesel)
4H	HR4ABC 22L
5H	HR5ABC 30L
6H	HR6ABC 38L
MP	No Tank
MPR	No Tank No Relief

Technical information - see page 33

VALVE	DESCRIPTION
010	P & T
030	Single Acting
03M	Single Acting with override
131	1 x Double Acting (Cetop)
132	2 x Double Acting (Cetop)
132SW	2 x Double Acting (Sandwich)
133SW	3 x Double Acting (Sandwich)
134SW	4 x Double Acting (Sandwich)
135SW	5 x Double Acting (Sandwich)
136SW	6 x Double Acting (Sandwich)

Technical information - see pages 75-87

SPECIAL	DESCRIPTION
MPR	Motor Pump with Relief Valve
MP	Motor Pump
SW	Sandwich Valve
V	Vivoil Pump
SWHP	Sandwich Valve Handpump
SWM	Sandwich Valve Manual Override
COV	CETOP Override
V	Vivoil Pump

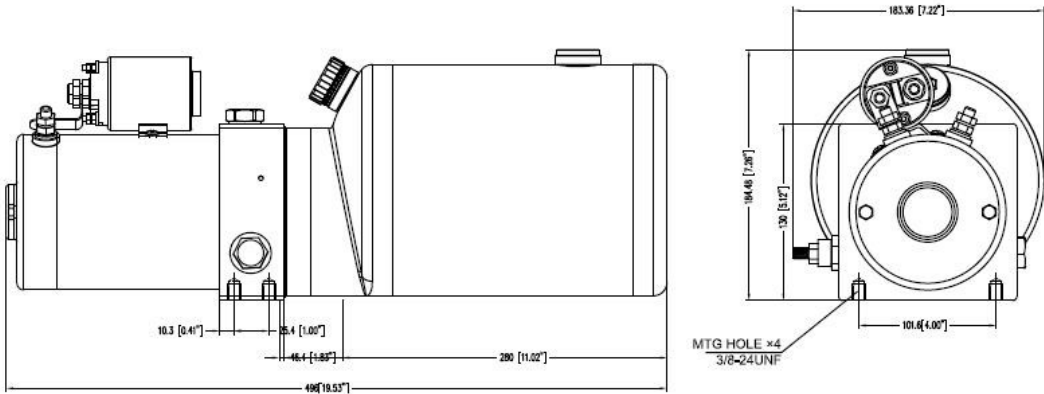
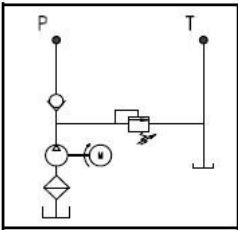
Multiple special options separated by /



1800 022 831
www.heavyhydraulics.com.au

Max Pressure 3500psi - 5.0 lpm @ 2500 psi

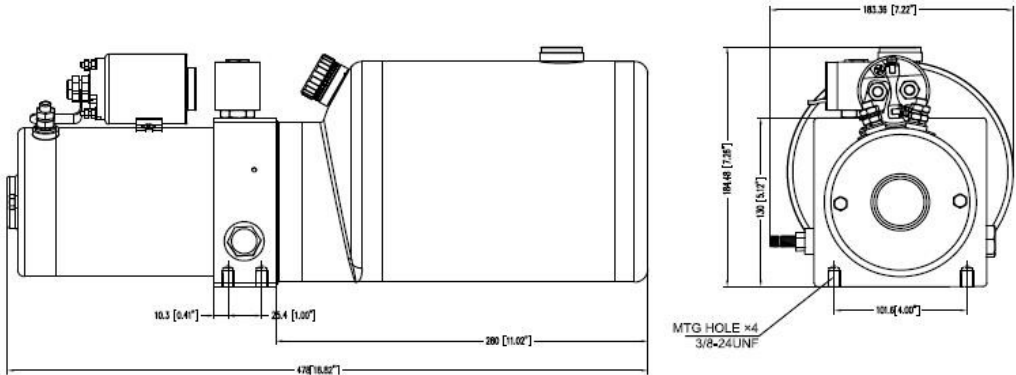
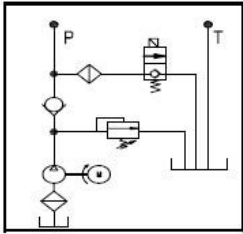
Part Number	Power	Volts	Pump CC	Tank Usable	Function	Relief Set
16DA010H211A	1.6kW	12v	2.1	3.8 Litres	P & T Ports Only	3000 psi
16DA010H212A				5.7 Litres		
16DA010H212B				7.5 Litres		
16DA010H213B				10 Litres		
16DB010H211A	2.2kW	24v		3.8 Litres		
16DB010H212A				5.7 Litres		
16DB010H212B				7.5 Litres		
16DB010H213B				10 Litres		



Tank Size	3.8 Litre	5.7 Litre	7.5 Litre	10 Litre	15 Litre
Length	480mm	550mm	480mm	540mm	710mm
Width	185mm				
Height	185mm				

Max Pressure 3500psi - 5.0 lpm @ 2500 psi

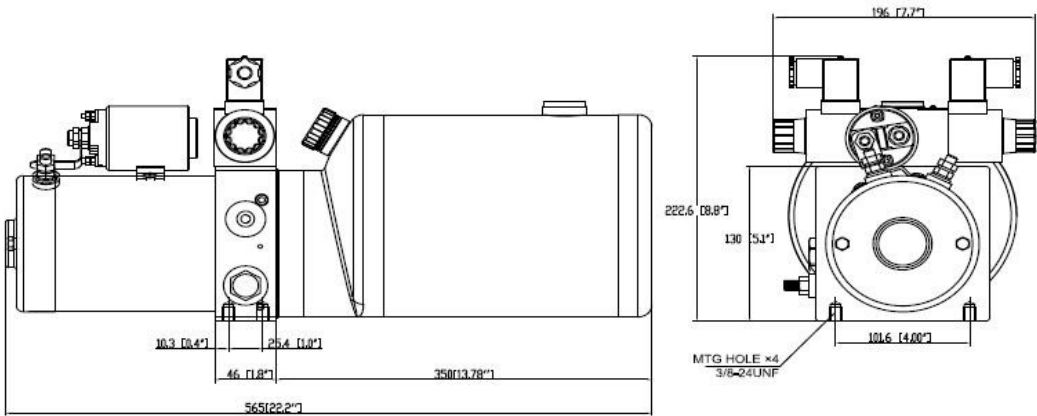
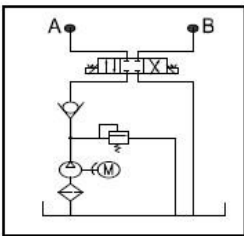
Part Number	Power	Volts	Pump CC	Tank Usable	Function	Relief Set
16DA030H211A	1.6kW	12v	2.1	3.8 Litres	Single Acting	3000 psi
16DA030H212A				5.7 Litres		
16DA030H212B				7.5 Litres		
16DA030H213B				10 Litres		
16DB030H211A	2.2kW	24v		3.8 Litres		
16DB030H212A				5.7 Litres		
16DB030H212B				7.5 Litres		
16DB030H213B				10 Litres		



Tank Size	3.8 Litre	5.7 Litre	7.5 Litre	10 Litre	15 Litre
Length	480mm	550mm	480mm	540mm	710mm
Width	185mm				
Height	185mm				

Max Pressure 3500psi - 5.0 lpm @ 2500 psi

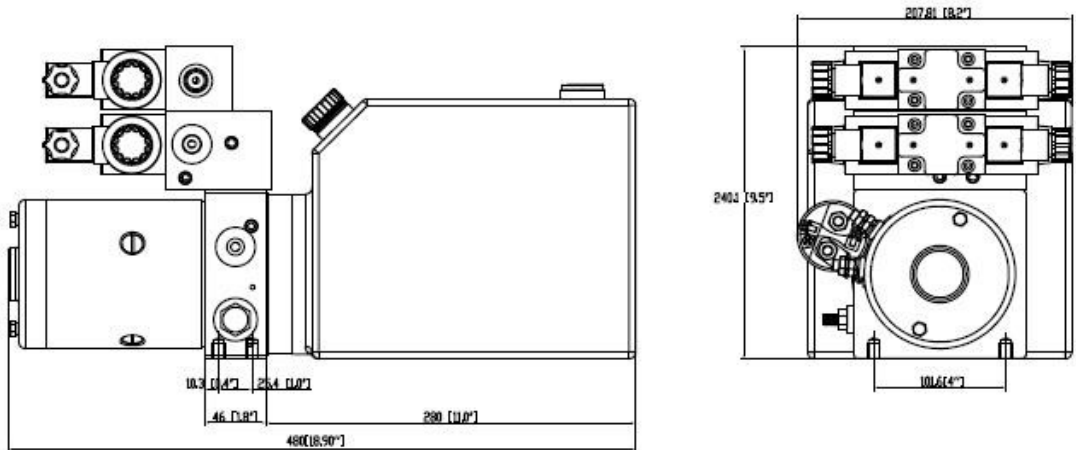
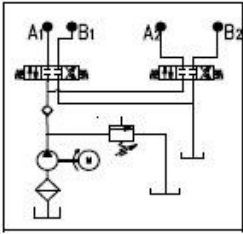
Part Number	Power	Volts	Pump CC	Tank Usable	Function	Relief Set
16DA131ZH211A	1.6kW	12v	2.1	3.8 Litres	D/A	3000 psi
16DA131ZH212A				5.7 Litres		
16DA131ZH212B				7.5 Litres		
16DA131ZH213B				10 Litres		
16DB131ZH211A	2.2kW	24v		3.8 Litres		
16DB131ZH212A				5.7 Litres		
16DB131ZH212B				7.5 Litres		
16DB131ZH213B				10 Litres		



Tank Size	3.8 Litre	5.7 Litre	7.5 Litre	10 Litre	15 Litre
Length	480mm	550mm	480mm	540mm	710mm
Width	200mm				
Height	225mm				

1.6 kW - 2 x Double Acting- Max Pressure 3500psi - 5.0 lpm @ 2500 psi

Part Number	Power	Volts	Pump CC	Tank Usable	Function	Relief Set
16DA132ZH212B	1.6kW	12v	2.1	7.5 Litres	2 x D/A	3000 psi
16DB132ZH212B	2.2kW	24v				

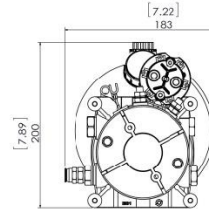
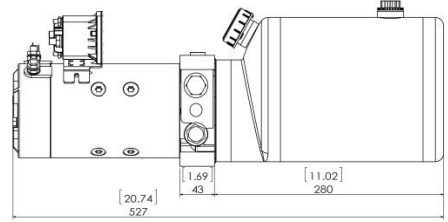
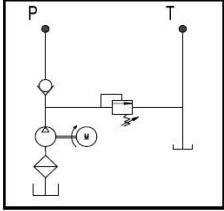


Tank Size	3.8 Litre	5.7 Litre	7.5 Litre	10 Litre	15 Litre
Length	480mm	550mm	480mm	540mm	710mm
Width	210mm				
Height	240mm				

2.5 kW - P & T - Max Pressure 3500psi- 9.0 lpm @ 2500psi

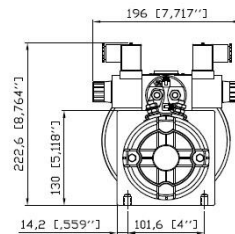
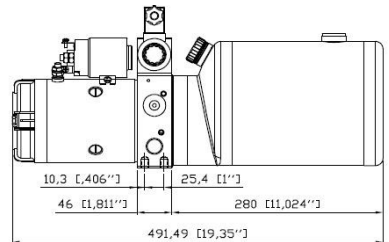
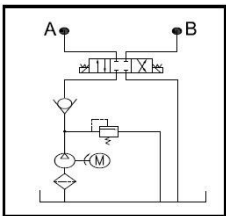
Part Number	Power	Volts	Pump CC	Tank Usable	Function	Relief Set
25DA010H321A	2.5kW	12v	3.2	3.8 Litres	P & T	3000 psi
25DB010H321A	2.8kW	24v				

For a Single Acting Power Unit, add \$50.00 to P&T price



2.5 kW - Double Acting - Max Pressure 3500psi - 9.0 lpm @ 2500psi

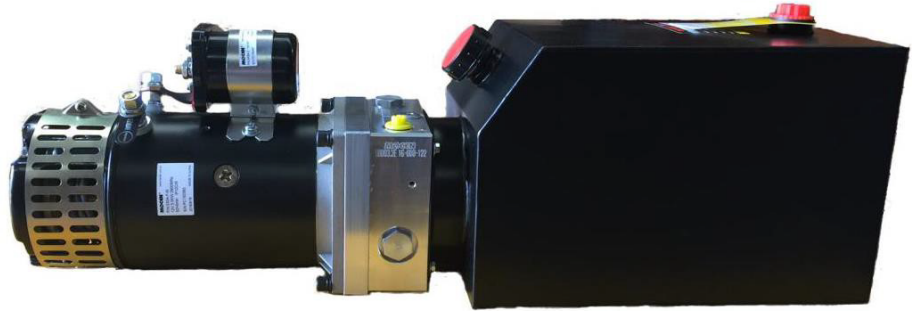
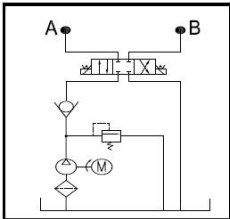
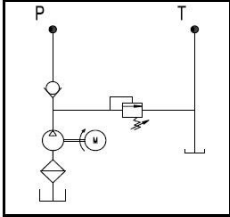
Part Number	Power	Volts	Pump CC	Tank Usable	Function	Relief Set
25DA131H321A	2.5kW	12v	3.2	3.8 Litres	D/A	3000 psi
25DB131H321A	2.8kW	24v				



3.0 kW - Max Pressure 3500psi- 8.0 lpm @ 2000psi

Part Number	Power	Volts	Pump CC	Tank Usable	Function	Relief Set
30DA010H373B	3.0 kw	12v	3.7	10 Litres	P & T	3000 psi
30DA131ZH373B					DA	

For a Single Acting Power Unit, add \$100.00 to P&T price



S2 Run Time = 20 Mins

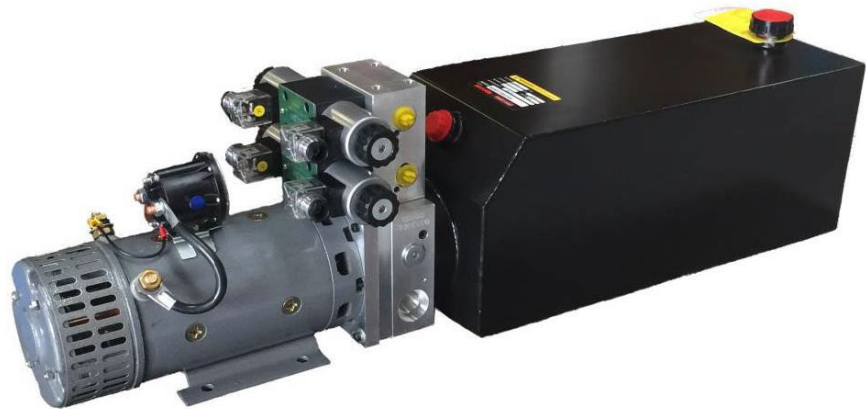
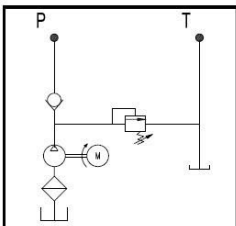
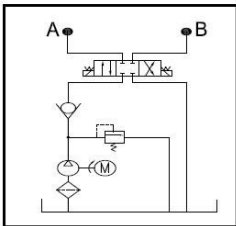
500 Amp Heavy Duty Start Solenoid

These units are hi-powered and cooled for longer run times

4.0 kW - Max Pressure 3500psi - 19.0 lpm @ 2000psi

Part Number	Power	Volts	Pump CC	Tank Usable	Function	Relief Set
40DB010H423B	4.0kW	24v	4.8	10 Litres	P & T	3000 psi
40DB131ZH423B					DA	

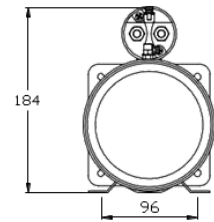
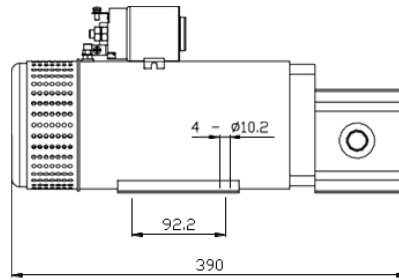
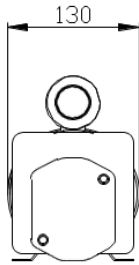
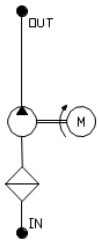
For a Single Acting Power Unit, add \$100.00 to P&T price



These units are hi-powered and fan cooled for longer run times

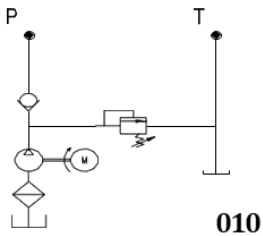
High Power 4kW Unit - Max Pressure 3000 psi

Part Number	Power	Volts	Pump	Ports	Function
MPA025	4.0 kW	24v	4.2 cc	3/8" BSPP	MP Unit

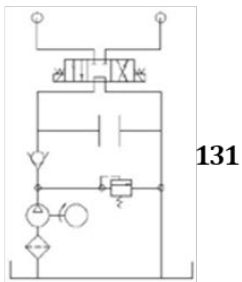
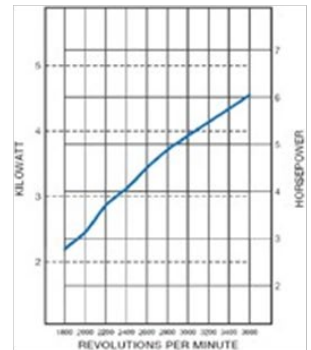


Intermittent use only

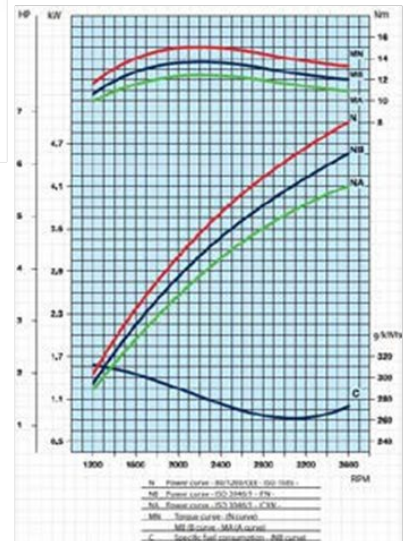
60PE010H278B		6 hp	Unleaded	P + T	2.7 cc	18 L	2500 psi
60PE131CH278K				D/A			
60DE010H278B		6.7 hp	Diesel	P + T	2.7 cc	18 L	2500 psi
60DE131CH278K				D/A			
GEU01-001		Power unit kit for DIY engine (P + T)					
GEU13-001		Power unit kit for DIY engine (with Cetop)					



Net power (petrol)



Torque Curves (diesel)



- Continuous duty
- Tank & pump changeable with others in range
- Multiple valve additions available
- Larger motor pump units available



Tanks- MS Series - Steel

Part Number	Usable Litres	Length	Diameter (Cyl)	Rep Picture
MS1AB	1	150mm	122mm	
MS2AB	1.4	200mm		
MS4AB	2.4	300mm		
MS6AB	3.3	400mm		

Tanks- LS Series - Steel

Part Number	Usable Litres	Length	Diameter (Cyl)	Rep Picture
LS0AB	2.8	200mm	170mm	
LS1AB	3.8	280mm		
LS2AB	5.7	350mm		


Tanks- MT Series - Steel

Part Number	Usable Litres	Length	Width	Height	Rep Picture
MT0AB	2.5	130mm	155mm	230mm	
MT2AB	7.5	280mm	200mm	200mm	
MT3AB	10	337mm			
MT4AB	12	395mm			
MT5AB	15	510mm			
MT18AB	18	300mm	280mm	300mm	

Tanks- HR Series - Steel

Part Number	Usable Litres	Length	Width	Height	Rep Picture
HR4ABC	22	350mm	250mm	300mm	
HR5ABC	30	470mm			
HR6ABC	38	570mm			

Tanks- RP Series - Poly

Part Number	Usable Litres	Length	Width	Height	Rep Picture
RPOAB	3	195mm	173mm	173mm	
RP2AB	6	335mm	173mm	173mm	
<p>For Power Unit Tank change MS, LS, MT, RP no charge. Add \$100.00 to list for large HR tanks.</p>					

Power Unit Mount

Part Number	Description
PUMT	Suits all power units with 130mm centre manifold



Tank Breather

Part Number	Description
TKBR	Tank Breather 3/4" NPT



Tank Port Plug

Part Number	Description
TKBP	Tank Plug 3/4" NPT



Power Unit Flange

Part Number	Description
FLST120	Weld flange for power unit mount



Power Unit Dust Cover

Part Number	Description
DMC01	DC power unit dust cover




Solenoids

Part Number	Voltage	Amp Draw	Core Size	Length	Connector
S2D12-08	12vDC	1.5a	13.3mm	37.5mm	2 wire
S2D24-08	24vDC	0.75a			3 pin DIN plug
D1D12-08	12vDC	1.5a	13.3mm	37.5mm	3 pin DIN plug
D1D24-08	24vDC	0.75a			
D1A220-08	220v AC	0.08a			



Pendant Contollers

Part Number	Function	Cord Length	IP	Rep Picture
KCB21-03	S/A	3 Metres	55	 <p>C Type with Coupler</p>
KCB22-03	D/A			
KCB21C-03C	S/A			
KCB22C-03C	D/A			
KCB22-10	D/A	10 Metres		
KCB32E-03	D/A with E-Stop	3 metres		
KCB42-05	2 x D/A	5 Metres		
KCB52E-03	2 x D/A with E-Stop			
KCB62-05	3 x D/A			
KCB72E-03	3 x D/A with E-Stop			

**All pendants above can be modified for different applications*