



# POWER TAKE-OFF'S



**CHELSEA<sup>®</sup>**  
POWER TAKE-OFFS

AISIN	1.25
ALLSION	1.26
EATON FULLER	1.27

**\*\*All PTOs come with mounting kits to suit\*\***

1800 022 831

[www.heavyhydraulics.com.au](http://www.heavyhydraulics.com.au)

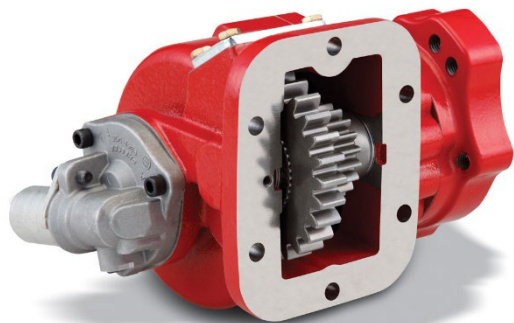
Side Mount Hotshift P.T.O.'s

AISIN / ALLISON



### 270 Series Powershift 6-Bolt

Main Data ("B" Ratio)	
Max Torque Rating (Nm)	407
Power (at 1000 r.p.m)	57HP / 43kW
Mounting position	Left
Pump rotation	Right Hand
Weight (Kg)	22



### 272 Series Powershift 6-Bolt

Main Data ("B" Ratio)	
Max Torque Rating (Nm)	407
Power (at 1000 r.p.m)	57HP / 43kW
Mounting position	Left and Right
Pump rotation	Right Hand
Weight (Kg)	22

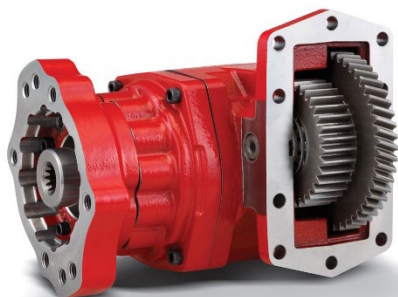
## Product Features

- Suitable mounting for both Aisin and Allison Transmissions
- Numerous output ratios available.
- Various output interfaces: 1-1/4" Keyed, SAE "B", ISO and Flange.
- Viton outputs seal for high working temperatures.
- Onboard PTO engagement feedback switch to communicate with vehicle parameters.
- Intermittent torque ratings 250-300 Lbs. ft. (340-407Nm)
- Remote mount electric-over-hydraulic shifting solenoid, 12V or 24V.

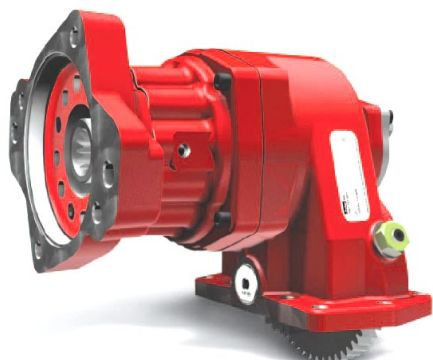
**\*\*All PTOs come with mounting kits to suit\*\***

## Side Mount Hotshift P.T.O.'s

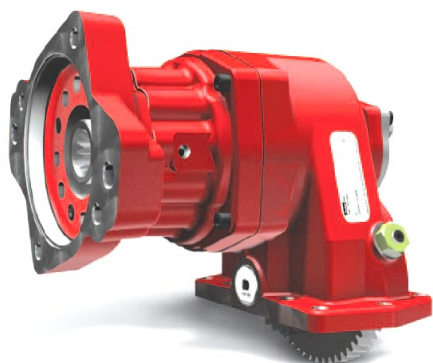
ALLISON

**280 Series Powershift 10-Bolt**

Main Data ("C" Ratio)	
Max Torque Rating (Nm)	556
Power (at 1000 r.p.m)	78HP / 43kW
Mounting position	Left, Right or Top
Pump rotation	Right Hand
Weight (Kg)	22

**870 Series Powershift 10-Bolt**

Main Data ("C" Ratio)	
Max Torque Rating (Nm)	908
Power (at 1000 r.p.m)	128HP / 95kW
Mounting position	Left, Right or Top
Pump rotation	Right Hand
Weight (Kg)	25

**877 Series Constant Drive 10-Bolt**

Main Data ("C" Ratio)	
Max Torque Rating (Nm)	908
Power (at 1000 r.p.m)	128HP / 95kW
Mounting position	Left, Right or Top
Pump rotation	Right Hand
Weight (Kg)	25

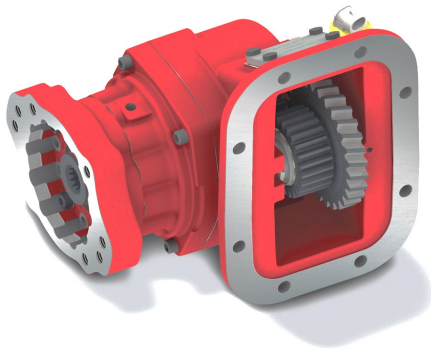
**Product Features**

- Hotshift Hydraulic Clutch System
- Numerous output ratios available.
- Various output interfaces: 1-1/4" Keyed, SAE "B", ISO and Flange.
- Viton outputs seal for high working temperatures.
- Compact housing to eliminate clearance issues.
- Onboard PTO engagement feedback switch to communicate with vehicle parameters.
- Onboard & Remote mount electric-hydraulic shifting solenoid options in 12V or 24V.

Side Mount Air Shift P.T.O.'s

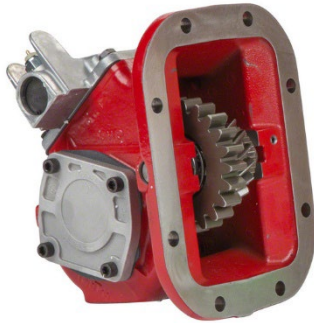
EATON FULLER

282 Series Powershift 8-Bolt



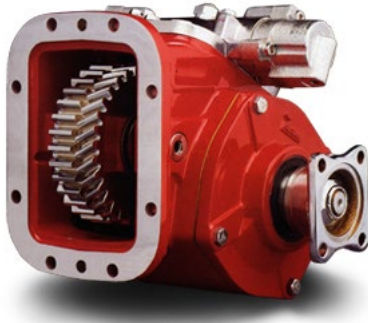
Main Data ("C" Ratio)	
Max Torque Rating (Nm)	407
Power (at 1000 r.p.m)	57HP / 43kW
Mounting position	Bottom Left
Pump rotation	Left Hand
Weight (Kg)	22

489 Series Side Mount 8-Bolt



Main Data ("C" Ratio)	
Max Torque Rating (Nm)	407
Power (at 1000 r.p.m)	57HP / 43kW
Mounting position	Bottom Left
Pump rotation	Left Hand
Weight (Kg)	22

880 Series Side Mount 8-Bolt



Main Data ("C" Ratio)	
Max Torque Rating (Nm)	678
Power (at 1000 r.p.m)	95HP / 71kW
Mounting position	Bottom Left
Pump rotation	Left Hand
Weight (Kg)	28.6

Product Features

- Hotshift Hydraulic Clutch System
- Numerous output ratios available.
- Various output interfaces: 1-1/4" Keyed, SAE "B", ISO and Flange.
- Viton outputs seal for high working temperatures.
- Compact housing to eliminate clearance issues.
- Onboard PTO engagement feedback switch to communicate with vehicle parameters.
- Pneumatic shifting.



1800 022 831  
[www.heavyhydraulics.com.au](http://www.heavyhydraulics.com.au)

